

MultiSystem

MultiSystem is our flagship organ control system that Organ-builders large and small have used throughout the world for over 15 years and gets a major update in 2010. The MultiSystem has been independently verified as the fastest organ relay available in the world and simply replacing an existing action with a MultiSystem can give an organ a new lease of life.

The MultiSystem is based around one or more MultiSystem processor locations with each location having its own junction panel. This allows the system to be sized to fit any organ.

We are able to send data over 1,000 ft with no degradation of the signal. Some of the larger systems may have eight locations spread out over a very large cathedral sized building.

An intuitive Layout Software program is available for those who wish to make their own changes.



Capture for MultiSystem

Capture for MultiSystem is an optional, full featured, robust piston capture system available in 40, 100, 200 and 300 memory levels. In addition to popular features such as multiple programmable crescendi, programmable Tutti and Ventilators and piston sequencers, CFM incorporates the revolutionary SCOPE feature. Using the SCOPE piston the organ-builder (or organist if SCOPE is installed on the piston rail) may specify which group of stops are affected by each individual piston.



MIDI for MultiSystem

We let you decide how much or how little your MIDI to include in the installation, if any at all. Anything from simple MIDI IN/OUT/THRU to our comprehensive yet easy to use Graphic Control Panel.

Tuning for MultiSystem

With Tuning for MultiSystem you can carry out routine or thorough tuning and voicing work from within the organ case or chamber without the need for a key holder. The remote handset guarantees simple operation and total portability. Organists have been known to use Tuning for MultiSystem to touch up the reeds on Sunday morning.

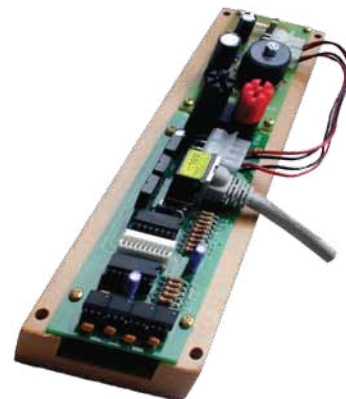


TauNet for MultiSystem

TauNet creates the opportunity to install MultiSystem output modules directly on the chest with only a CAT5 cable to run back to the MultiSystem plane. Windchests can be completely wired in the shop, cutting down on costly on-site wiring time.

IntelliKey for MultiSystem

Using Hall effect contactless keying, IntelliKey is capable of defining the On and Off points in the key travel. IntelliKey plugs convenient directly on the MultiSystem plane.



Diode Coupler

We have been manufacturing the Diode Coupler since 1968 and it is still the preferred switching system for many pipe organ builders. For small installations and offset chests the Diode Coupler is the most cost effective solution. We can supply upgrade kits to modify an existing system on site to allow for additions to the organ.



MultiLevel Capture

The MultiLevel Capture Combination Action has been the workhorse of capture systems for almost 25 years. It has a wide range of features which many organists find convenient and easy to use. As a stand alone capture system, there is none better. We are often adding new features that can easily be incorporated into any existing system. Now available with a brand new processor operating up to 512 memory levels, a host of features and an industry standard interface recognised by organists around the world.



Total Recall

The perfect solution to teaching and concert situations where many organists use the same instrument, Total Recall allows each organist's piston combinations to be saved on a USB memory stick. All Tutti and Crescendo settings will also be saved. The USB stick may be removed and used later to easily install the piston settings to the capture systems. Total Recall is available for both new and existing MultiLevel Capture and Capture for Multi-System.



DirectConnect Slider Control

Rugged and easy to install slider control system which has been the benchmark for many years. The card racks are offered in 10 and 20 card capacity. Four versions of the Direct Connect card are available. Dual Slider Solenoid Control; Dual Luminous stop control; Dual Coupler Control; and Dual Registration Control. Different cards types may be mixed in a rack to suit requirements.



CapLite

A stand alone capture system for 10 or 100 levels for those price sensitive projects. CapLite is easily programmed by the installer and is small enough to fit inside the most compact consoles.



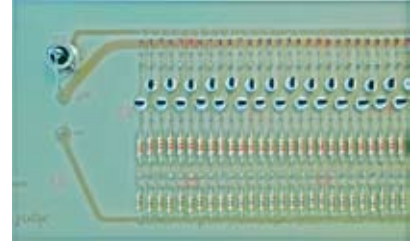
Pedal Contact Assembly

Using reliable reed switches and permanent magnets mounted on the pedal keys, this is an easy to install and time tested keying system that is compatible with any relay.



Relay for Single Magnets

This is a straight magnet driver which can be used for up to 73 notes to add chests to existing organs. Available in a variety of input/output polarities. A stop control can be added using our Busbar Switching relay.



Busbar Switching Relay

This module when used with isolation diodes provides an economical means of providing a stop action for any unit chest action. These modules are commonly used as stop action control whereby straight ranks of pipes are operated by individual electric magnets. Each magnet is supplied by an output from a negative going relay, such as our 621004A0 or 621004A1, and the Busbar Switch is used to interrupt the Positive return from all the magnets serving one rank of pipes.



Tutti Piston Reverser

This is a latching reverser designed for use with a piston which acts "Blind". Frequently used for "Full Organ" or "Zimbelstern" functions or anything which requires a permanent output. The Tutti Reverser is available in 5 and 15 Amp versions.



Reverser Module

An easy way to make any electric or electro-pneumatic drawstop or tablet function as a reversing stop. Each push of the piston alternatively fires the On or Off coil.



Tremulant Pulsator

A standard for years this simple device lets the organbuilder control the speed and depth of the Tremulant motor. Also available to operate in a "Push/Pull" mode for use with solenoids.



Key Relay

These are a direct replacement for the old Reisner C/5 electro mechanical relays with 1 input and 14 outputs. Key Relays are available in four polarity options and can be used as a simple polarity reverser or a current booster.



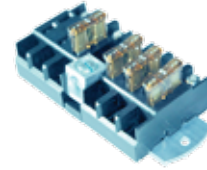
PowerLight

High performance CSA and UL approved power supplies using proven technology and featuring a compact size and ultra light weight. The design features fast response voltage regulation to keep the organ voltage rock steady under rapidly changing loads enabling a quieter and faster action. Available for 30, 55 and 75 Amp output. 12-18V or 24V versions are also available and also a 240V option.



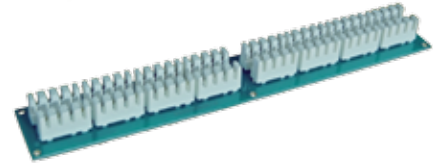
PowerBlock

A convenient and neat solution to provide fused magnet coil returns anywhere in the organ helping you to satisfy electrical code guidelines. It uses commonly available automotive blade fuses.



Termination Block

A 32 way termination block featuring Krone punch blocks for quickly and neatly joining up to 4 circuits. It can be used like any junction board but because it uses Krone connectors no soldering is required.



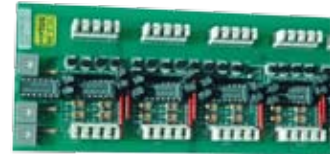
SynCard

It simply takes four stop inputs and runs them through four separate delay circuits with up to 0.5 seconds of delay to four output terminals. SynCard is indispensable where many switch signals come on simultaneously but the switches don't "make" at the same time such as couplers.



Pizzicato Card

For use with MultiSystem, the Pizzicato card provides a short, pulsed output to selected ranks to create a characteristic orchestral sound. A special modified Pizzicato card may be used to drive chests directly.



Diode Relay Spares Kit

A must-have for anyone servicing the SSL/SSOS diode coupler system since the original installers may not have been kind enough to leave the original spares bag with the relay. The Spares Kit contains all the components one may need when repairing or trouble shooting.



Console Clock

Using a typically elegant SSOS display the clock also functions as a stop watch and a transposer control. The clock is only 2 1/4" square and matches other SSOS controls.



Changeover Relays

We manufacture a variety of changeover relays to route signals from one path to another. Perfect for piston coupling or transfer.

